



Bethlehem Art Association

Sept./Oct., 2016
Newsletter



Hello Artists,

Welcome to another new season with the Bethlehem Art Association. 2016 is the fiftieth anniversary year of the Bethlehem Art Association, with special events to celebrate this.

The big event this fall will be a Fiftieth Anniversary Show and Sale, to be held at the Delmar Reformed Church on November 5. This will be a wonderful opportunity to emphasize the connection between the BAA and the community that is home to us. There will be room for about 25 artists to show their work, with a special section for any artist who brings a picture that depicts a scene in Bethlehem. There will also be opportunities for people who are not showing their work to be part of this event by helping with publicity, refreshments, decorations, etc. You will be hearing from me about the need for more volunteers to make this celebration a success.

Two other events will be part of our celebration year. One will be the Annual Fall Show at the Bethlehem Library, the other a show at the Bethlehem Town Hall. Remember that the BAA fall show is the open show that provides an opportunity for any member who wishes to have a piece shown at the library. This year's Town Hall Show will not be themed and, therefore it is open to all styles and media used by members.

I want to thank all the people who help with the various tasks that are involved in running the Association. The BAA depends entirely on volunteer efforts to keep us going strong. This fall will provide all of you with a chance to help showcase the artists that are such an important part of this community.

Peter

BAA Mission Statement

The BAA is a focal point for all kinds of visual art activities in Bethlehem. We promote art, art activities, and artists in Bethlehem.

www.bethlehemartassociation.com

Please welcome new members Jahspeer el, Holly McGowen and Diane Campion

President

Peter Keitel: 588-0005

pjkeitel@gmail.com

Vice President

Jacqueline Smith: 489-1882

Treasurer

Rita Buttiker

Corresponding Secretary

Diane Wozniak

Recording Secretary

Laurel Petersen

Community Spaces

Beverly Braun: 489-0601

Membership Chair

Gary Mehlum: 482-8606

gmehlum@gmail.com

Newsletter

Ellie Prakken: 439-7559

emprakken1@verizon.net

Exhibitions/Shows

Beverly Braun

Laura Garramone

George Dowse

Farmers Market

Nancy Demetriades: 439-0086

Publicity

Susan Keitel

Students Awards

Dale Crisafulli

Scrapbook

Joan Van Alphen

Webmaster

Peter Keitel

Workshops

Jacqueline Smith

Bob Lynk

Refreshments

Diane Wozniak



Meetings

Thursday, September 15, 6:45 p.m.

Our first presenter of the new season will be Nanette Shapiro. Nanette does abstract drawings using ink, pencils, pastels, charcoal, and graphite. Her process begins with automatic drawing and her goal is to create depth and



energy in her forms by way of employing strong color. Nanette is an active member of the National Association of Women Artists, the Woodstock Artist Association and Museum, the

Art Center of the Capital District, and the Albany Center Gallery. Recently her work was selected for the Fence Show Select, and the New York State Museum showcasing artists of New York.

Abstract Painting by Nanette Shapiro



Thursday, October 20, 6:45 p.m.

Pastel Painting by Kristin Woodward



The BAA welcomes Kristin Woodward who will present a pastel demonstration at the October 20 monthly meeting and a pastel workshop on Saturday, November 12. She has been working in watercolor, oil, and pastel for 33 years and has been teaching private classes and workshops for 25 years. In her words: "Color makes a painting sing. Seeing and interpreting color...in landscapes, seascapes, still life, animal portraits... it's all about the color!" Kristin's work can be seen at www.kristinwoodwardartist.com

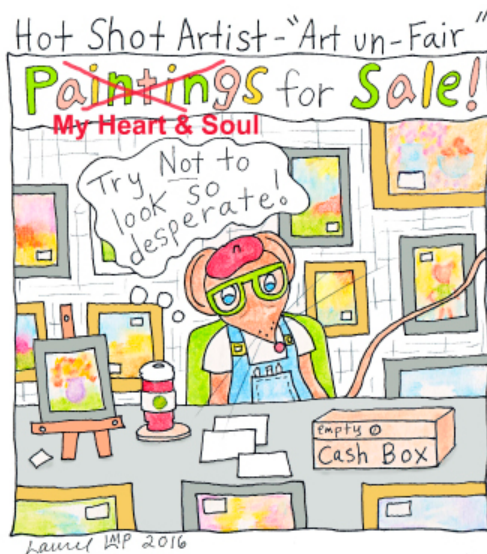
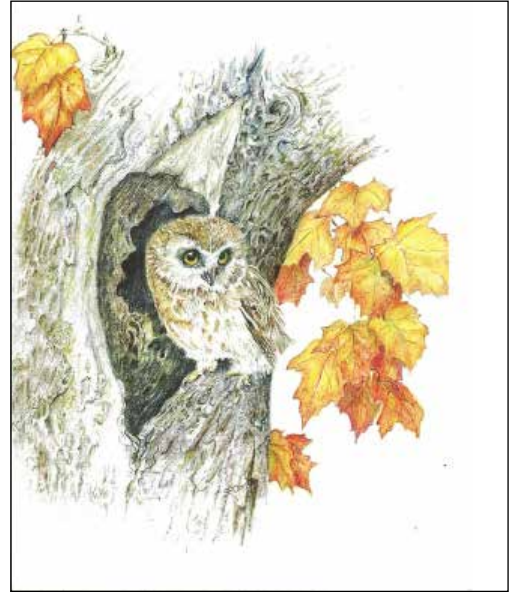




News of Our Members

Sandra Orris is having a show along with Dot Chast called "Two Perspectives on the World of Nature" at the Agroforestry Center on Rte. 23 in Acra, NY. The show will be on during the months of September and October with the opening reception Saturday, September 10, from 3-5p.m.

*Saw Whet Owl
by Sandra Orris*



Un-Fair by Laurel Petersen

"This is a little cartoon I started this summer as a part of a series. When I was a young college student my Mom was dropping me off at the bus station and we got into a little fight. I don't remember what we were fighting about, but I remember her saying 'Who do you think you are, somekind of hot shot artist?'"

Laurel Petersen"

Jacqueline Smith will be leading plein air painting sessions in September and October. Contact her at 489-1882

50th Anniversary Show and Sale

This fall the BAA Fiftieth Anniversary Show and Sale will be a major event, celebrating the BAA and all of us who are members. It will tell the community about its artists and their wonderful work.

It will be held at the

Delmar Reformed Church, 386 Delaware Ave. on Saturday, November 5 from 10 a.m. to 4 p.m.

This site was selected for its central location in Delmar and its easy access. We hope to draw a significant number of members of the Bethlehem community to introduce them to the BAA and its good work. There is room for about 25 artists to display their work on large tables or display racks. The participation fee will be \$15. To sign up for the show, please contact Rachel Criscione at 810-3387 or rdcriscione@msn.com Please indicate whether you will need a table or if you can bring display racks. In addition to artists, we will need volunteers to handle a variety of tasks necessary to make this event a success. There are too many to list here, but please watch for email appeals requesting your help. If you don't use email, please give me a call - Peter Keitel 588-0005



Meeting Recaps and More News

BAA Spring Show

The May show at the Bethlehem Public Library was the 50th Annual Spring Show. Many thanks to the Exhibit Committee, the Show Committee, the Judge, Jacqueline Watsky, and all the others who made this show a success.

Prize winners in the show were:

Best in Show:	<i>To Pot or Not</i>	Joan Krathaus
1st Place:	<i>Ode to Nature</i>	Bev Braun
2nd Place:	<i>Apples</i>	Carol Turner
3rd Place:	<i>The Pink Chicken</i>	Lorraine Chesin
HM:	<i>The Big Idea</i>	George Dowse
HM:	<i>Girasoles</i>	Lynda Spielman
HM:	<i>Benedetto Madona</i>	Virginia Acquario
HM:	<i>Arbor</i>	Carol Turner



Judge Jacqueline Watsky

Bethlehem Town Hall Show

The fourth annual Bethlehem Art Association Show will be held at the Bethlehem Town Hall in October and November. For the past two years the show was limited to scenes in the Town of Bethlehem. However, this year it will not be a themed show and scenes of Bethlehem will be included in the Fiftieth Anniversary Show instead. All members will have the

opportunity to submit a piece for the Town Hall Show. There is, of course, a space limitation with room for 24



pictures at the Town Hall. If you have a submission for this show, please contact Peter Keitel – pjkeitel@gmail.com or 588-0005.



People's Choice Awards

1st Place:	<i>Poncha Pond</i> ~ Nancy Noble Gardner	22 votes
2nd Place:	<i>Misty Autumn Morning</i> ~ Rita Buttiker	20 votes
3rd Place Tie:	<i>To Pot or Not</i> ~ Joan Krathaus	13 votes
	<i>Ode to Nature</i> ~ Bev Braun	13 votes
4th Place Tie:	<i>The Big Idea</i> ~ George Dowse	10 votes
	<i>Lion's Park View</i> ~ Karen Woodin	10 votes
5th Place:	<i>Jellyfish in Bloom</i> ~ Phil Jonas	8 votes
6th Place:	<i>Off to the Races</i> ~ Peg Vetro	7 votes

Don't forget to show you membership card at Arlene's Artist Materials for your 10% discount.



Meeting Recaps and More News

BAA Picnic



The annual BAA June picnic was hosted this year by Peter and Rita Buttiker. Our deepest thanks to them for once again making their lovely home in the country available to us.

Raffle of Charles Schade Painting



In our raffle to help fund the BAA Scholarships for BHS students, the two latest winners were Jeanette Young and David Stephany. Jeanette won the Charles Schade Painting of the 1755 Van Zandt House in Slingerlands. David won a set of oil and acrylic paints. Jeanette must have a magic touch with raffle tickets, for she was the winner of the Edwin Becker painting last year. Thank you to Diane Wozniak for donating the painting and to Mary Feedore for donating the paints. Also, thank you to Laura Jonas for running the raffles.



Membership

Please note that dues are due September 1.

We need to get the membership information in by then, so we can produce our directory in a timely manner. Also, it is important to indicate your wishes in regards to your email address.

Many people like to communicate by email and it would be handy to publish that information, unless it is something you want to keep private.

The BAA runs on volunteer power, so be sure to indicate your areas of interest.

For information contact Peter Keitel at 588-0005

Mail this form with your check for \$25 written to the **Bethlehem Art Association** to the new membership chairperson, Gary Mehlum, 34 Hedgerose Lane, Delmar, NY 12054.

Dues should be sent in at the beginning of the fiscal year which is September 1.

Final deadline for being listed in the directory is October 31.

Name: _____

Street: _____

City: _____

Zip Code: _____

Telephone: _____

E-mail Address: _____

I would prefer to receive my newsletter via email: Yes No

Please publish my email address in the membership directory: Yes No

I can help with: Organizing/hanging shows Workshops Refreshments Publicity

Newsletter web Other _____

Delmar Farmers Market

There are still several openings available at the Delmar Farmers Market this year. Check the BAA website. Remember that we will not be participating in the indoor portion of the market this year.

Contact Nancy Demetriades at 439-0086 or nademetri@yahoo.com to sign up.



Venues

BAA Community Exhibit Schedule September 2016 through December 2016

Sign up at a monthly meeting to schedule a showing of your work
or contact Bev Braun at 489-0601 or bevbraun@nycap.rr.com

VENUES RESERVED FOR BAA MEMBERS

	SEPT	OCT	NOV	DEC
BONE & JOINT CENTER 2 halls, 20 hangers and 16 hangers	CAROL TURNER		BOB LYNK	
FOUR CORNERS LUNCHEONETTE 10 hangers - can hold doubles	MARY FEEDORE	OPEN	JACQUELINE SMITH	DEE FOLEY
BANK OF COXSACKIE Rte. 9W, Glenmont - 13 spaces	PAUL JOLICOUER	LESLIE BERLINSKY		

VENUES FREQUENTLY AVAILABLE FOR BAA MEMBERS

The Massry Residence at the Daughters of Sarah Senior Community:

Contact Antoinette Guenette at 724-3406 or guenette@dosscc.org. Space for 15 pictures

Merriman and Pfister, An Artisan's Marketplace. Located behind the Perfect Blend at the Four Corners.

Contact Kathy Agneta at 588-7268

Big Eye Gallery Fine Arts and Crafts, 270 County Route 405, South Westerlo, NY

Contact Hope Konecny at 966-5833

Terra International Cuisine and the NuWave Café, 238 Washington Ave., Albany

Contact Howard Katz at howard@terraalbany.com

Capital Bank, Slingerlands Price Chopper Plaza:

Contact Greg Bruno at 694-5625 or email gbruno@capitalbank.com

Bethlehem Public Library, Delaware Ave., Delmar:

Contact Alissa, 439-9314. Ask for the Information desk. Space is available on a 24 month cycle and requests are handled on a first-come-first-serve basis. Early on the first business day of the month appears to be the best time to submit requests for one of the two corridors.

Beverwyck Independent Retirement & Assisted Living:

Contact Jessica Newman, 451-2111. Beverwyck Lane/Autumn Drive, Slingerlands, 15 spaces, availability. Please call.

Greenville Public Library, Rte. 32, Greenville:

Contact Stanley Maltzman, 634-7386. Two month showings. Space for up to 50 pieces.

Uncommon Grounds Coffee & Bagels, 1235 Western Ave., Albany:

Contact Geralee Hall at geralee.hall@gmail.com. Please note that Ms. Hall also arranges exhibits for their Saratoga location on Broadway.

Voorheesville Public Library: 51 School Rd., Voorheesville

Contact Lynn Kohler at 765-2791 to schedule a show and reception.

National Bank of Coxsackie, Rte. 81 near Rte. 32, Greenville: Contact Rita Buttiker, 634-2272

Greene County Bank, Rte. 32 near Bryant's Plaza, Greenville: Contact Rita Buttiker, 634-2272

Madison Theater Windows: Contact Lorenz M. Worden, 489-0866 <http://lorenzworden.wordpress.com>



This Year's Main Events

*All Monthly Meetings begin at 6:45PM
in the Bethlehem Public Library Community Room
Please note, not all meetings are on the 3rd Thursday!*

- Thursday, September 15** ~ Demonstration ~ Abstract painting by Nanette Shapiro
Thursday, October 20 ~ Demonstration ~ Pastel painting by Kristin Woodward
Thursday, November 1 ~ Fall Show Submissions Drop-off At Bethlehem Public Library, 3:30-5:30 p.m.
Saturday, November 12 ~ Art Workshop ~ Pastel painting with Kristin Woodward
Thursday, November 17 ~ Fall Show Reception ~ Comments by Juror TBD
Wednesday, November 30 ~ Fall Show art removal by 9:00 p.m. (**No Exceptions**)
Thursday, December 15 ~ Holiday Party ~ Demonstration by Lynda Spielman
Thursday, January 26 ~ Demonstration ~ TBD
Wednesday, February 15 ~ Evaluation of member artwork by Gary Shankman
Thursday, March 16 ~ Demonstration ~ Landscape painting by Jim Coe
Wednesday, April 5 ~ Annual Meeting ~ Delmar Presbyterian Church ~ 7:00 p.m.
Saturday, April 8 ~ Art Workshop ~ Landscape painting with Jim Coe
Thursday, April 20 ~ Demonstration ~ Encaustic Wax Painting by Ali Herrmann
Tuesday, May 2 ~ Spring Show Submissions Drop-off At Bethlehem Public Library, 3:30-5:30 p.m.
Thursday, May 18 ~ Spring Show Reception ~ Comments by Juror Tony Iadaciccio, Director,
Albany Center Gallery
Wednesday, May 31 ~ Spring Show art removal by 9:00 p.m. (**No Exceptions**)
Thursday, June 15 ~ Picnic at Bob and Nancy Lynk's

202 Orchard St., Delmar NY 12054

